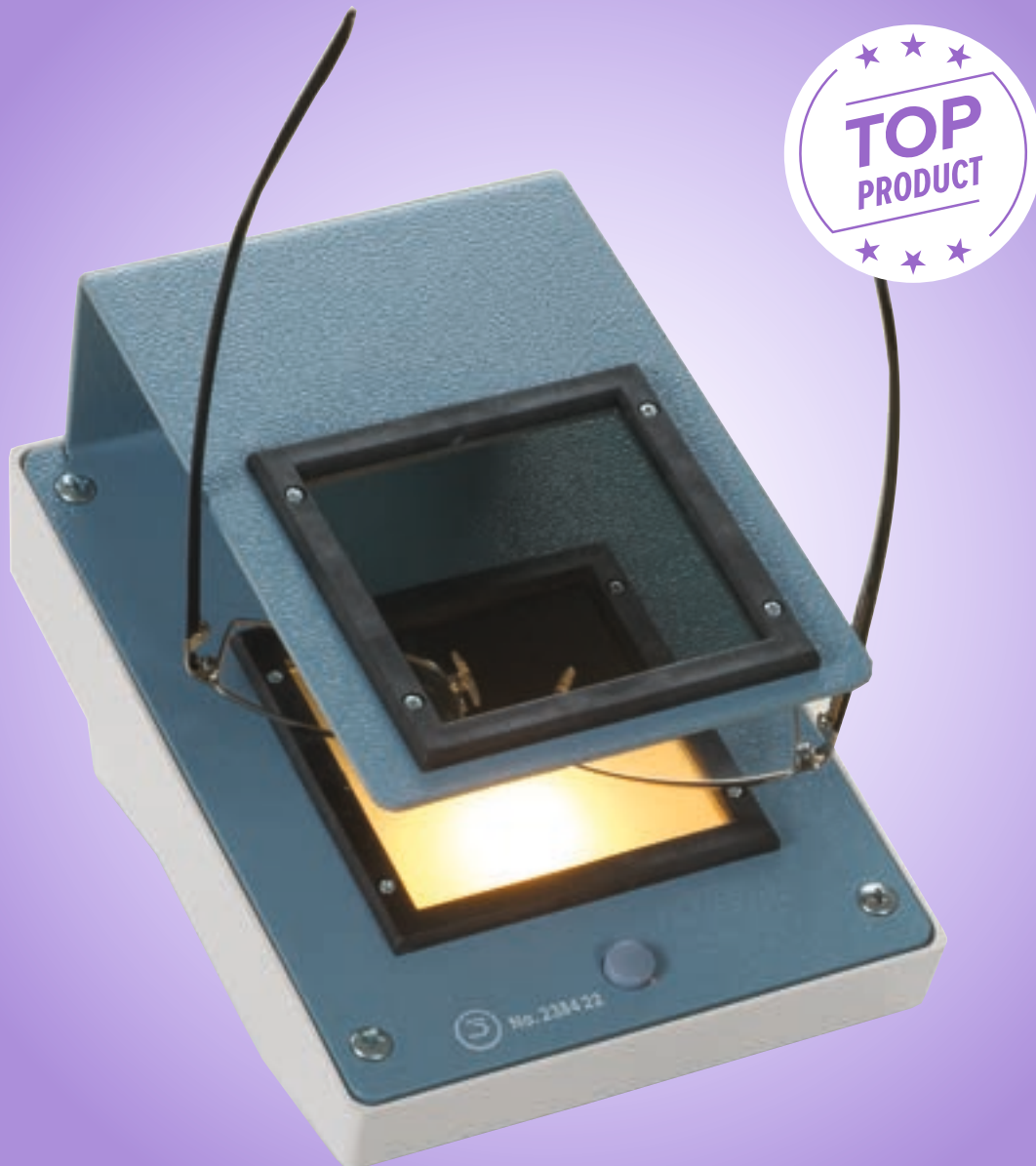


## The B & S polariscope

"Made in Germany" quality. Its outstanding characteristics are ease of use and functional reliability. The tilted alignment of the polarisation filter makes identifying the stress fields in the lens area both simple and easy. A large test area and good ergonomic qualities make it an optimum aid in the workshop and in the sales area.



### Polariscope

- Now with LED light source
- With illumination via push-button
- Automatic shut-off after approx. 15 sec

**2384 22**

### LED Light Source


For No. 2384 22.

**2384 56**

#### Technical data

|                                    |                             |
|------------------------------------|-----------------------------|
| Size of test area:                 | 68 x 68 mm                  |
| Distance between polarised fields: | 50 mm                       |
| Timer:                             | approx. 15 sec illumination |
| Power:                             | 1.3 W                       |
| Power usage per 10 min:            | 0.0002 kWh                  |
| Voltage:                           | 230 V                       |
| Size (w x h x d):                  | 130 x 130 x 175 mm          |
| Weight:                            | 700 g                       |

**36** month warranty!

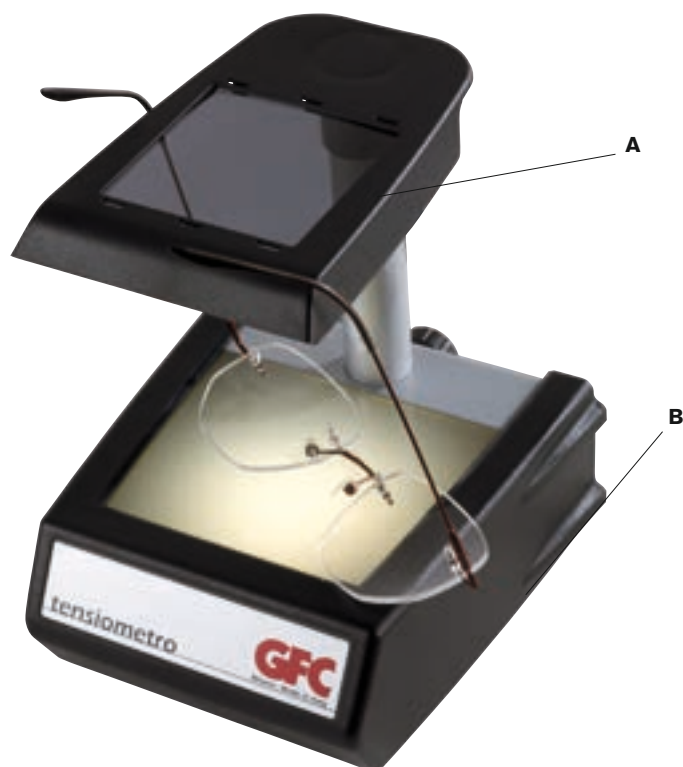
 For **spare parts** contact your local distributor.



## GFC Polariscope with Adjustable Inclination of the Unit


- Comfortable use because of adjustable inclination of the unit
- Suitable for spectacles with high lens curves
- Extra large distance between the test fields
- With lighting inside the metal housing

2397 22



| Technical data                     |                                |
|------------------------------------|--------------------------------|
| Size of polarising field:          | A) 58 x 58 mm<br>B) 75 x 75 mm |
| Distance between polarised fields: | 95 mm                          |
| Power:                             | 6 W                            |
| Power usage per 10 min:            | 0.0009 kWh                     |
| Voltage:                           | 230 V                          |
| Size (w x h x d):                  | 135 x 165 x 150 mm             |
| Weight:                            | 700 g                          |

 **36 month warranty!**

 For **spare parts** contact your local distributor.



## Hand Polariscope


With power saving LED, battery, made of plastic and metal.

2393 20



| Technical data                     |                        |
|------------------------------------|------------------------|
| Size of polarising field:          | 40 x 40 mm             |
| Distance between polarised fields: | 25 mm                  |
| Voltage supply:                    | 9 V battery (type PP3) |
| Size (w x h x d):                  | 100 x 55 x 48 mm       |
| Weight:                            | 180 g                  |

 **36 month warranty!**

 For **spare parts** contact your local distributor.