

A must for all opticians who place value on comfortable working and good design.

This device shows competence and is perfect for working in the sales area. The OPTIFORMA can be built into the service desk. Frames can be heated in almost total silence. A digital temperature and time setting for gentle processing of sensitive materials is an expression of a genuine quality product made in Germany.



OPTIFORMA Profi

- Quiet running
- Stepless temperature and time setting via LCD and keys
- Menu driven handling
- Installed overheat protection
- Auto cut out if unit is knocked over in case of device inclination
- Automatic cooling phase
- Can be built into work bench or service desk, installation depth: 145 mm
- Including a template to use on a work top with a max. of 28 mm thickness
- Distance between the air jets: 45 mm
- Including spot heating jet

 Black/Grey

2872 01


Template for OPTIFORMA Profi No. 2872 ..

2872 25

Technical data

Temperature scale:	60 to 140 °C
Adjustable operating time:	50 to 249 s
Overheating protection through thermo switch	
Power:	800 W
Power usage per 10 min:	0.1333 kWh
Voltage:	230 V
Size (w x h x d):	230 x 228 x 275 mm
Weight:	2.1 kg

 **36 month warranty!**

 For **spare parts** contact your local distributor.




● Design-
Zentrum
Nordrhein-
Westfalen

Design innovations
Award for
high quality design



OPTIFORMA Standard

- Temperature level adjustable using a potentiometer
- Additional device for pointed heating
- Auto cut out if unit is knocked over in case of device inclination
- Thermal overload protection
- Distance between the air jets: 45 mm


 Black/Grey

2871 01

Technical data

Temperature scale:	80 to 140 °C
Overheating protection through thermo switch	
Power:	800 W
Power usage per 10 min:	0.1333 kWh
Voltage:	230 V
Size (w x h x d):	170 x 228 x 190 mm
Weight:	1.5 kg

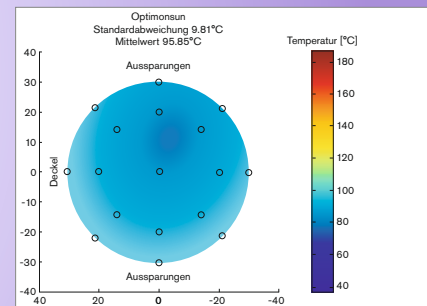
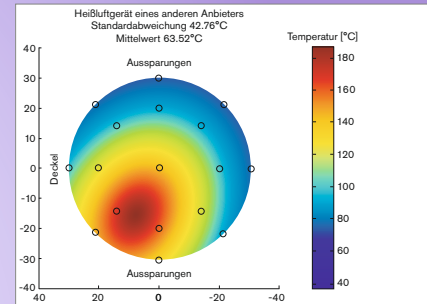
 **36 month warranty!**

 For **spare parts** contact your local distributor.

An optimized Classic

In cooperation with the technical university of Aalen we made a study to optimize the heat distribution in the cup which is used in this new generation of the OPTIMONSUN.

This branded product made in Germany corresponds with the highest requirements. The electronic version offers an additional third program which is designed for wood and horn processing at higher temperatures (180–230 °C).



Design Frame Heater OPTIMONSUN

- New design unit with especially even temperature distribution in the cup
- More comfortable handling of the frame due to an optimised opening in the cup
- Thermal overload control
- With plastic cup diam. 85 mm, slit width 30 mm, slit depth 34 mm
- Including spot heating jet
- 2,5 m helix cable (2 m normal cable with built-in unit)



2865 00
White



2865 01
Metallic
Black



2865 02
Metallic
Grey



2865 03
Blue

2865 ..

Design Frame Heater OPTIMONSUN Electronic

Technically like 2865 .., but also features:

- Movement sensor for comfortable working
- 3 different settings (non-stop use, 10 min, horn program up to 230 °C)
- With constant electronic temperature control, temperature adjustable
- Automatic switch off after 3 hours
- Including additional slot heating jet



2866 00
White



2866 01
Metallic
Black



2866 02
Metallic
Grey



2866 03
Blue

2866 ..

Technical data	2865 ..	2866 ..
Temperature:	180 °C	min. 60 °C, max. 230 °C
Temperature with spot heating jet:	max. 200 °C	max. 240 °C
Temperature regulation:	no	10°-steps
Power:	155 W	300 W
Power usage per 10 min:	0.0258 kWh	0.0499 kWh
Voltage:	230 V	230 V
Size (w x h x d):	190 x 265 x 190 mm	190 x 265 x 190 mm
Weight:	1.7 kg	1.7 kg

36 month warranty!

For **spare parts** contact your local distributor.



Frame Heater OPTIMONSUN

- With plastic cup Ø 85 mm, slit width 30 mm, slit depth 20 mm
- **Without** temperature control
- Metal housing
- 2 m helix cable



2867 ..

2867 ..



36 month warranty!

For **spare parts** contact your local distributor.

2867 01
Metallic
Black



2867 10
Metallic
Grey



2867 15
Blue



2867 22
White

Frame Heater OPTIMONSUN Electronic

Technically like 2867 .., but also features:

- With constant electronic temperature control, temperature variable adjustable

2869 ..



36 month warranty!

For **spare parts** contact your local distributor.

2869 01
Metallic
Black



2869 10
Metallic
Grey



2869 15
Blue



2869 22
White

2869 ..



Technical data	2867 ..	2869 ..
Temperature:	max. 180 °C	min. 65 °C, max. 180 °C
Temperature with spot heating jet:	max. 200 °C	max. 200 °C
Temperature control:	no	adjustable
Power:	215 W	250 W
Power usage per 10 min:	0.0358 kWh	0.0417 kWh
Voltage:	230 V	230 V
Size (w x h x d):	100 x 250 x 160 mm	100 x 250 x 160 mm
Weight:	1.3 kg	1.7 kg

Frame Heater Fata Up Plus/Fata up

- The quiet and efficient helper during frame adjustments
- Very light, quiet running heater with or without temperature control
- Including spot heating jet

Fata up Plus (with temperature control)

White

Black

2878 00

2878 01

Fata up (without temperature control)

White

Black

2878 10


2878 11



Technical data

Temperature:	0–150 °C
Power:	350 W
Power usage per 10 min:	0.0583 kWh
Voltage:	230 V
Size (w x h x d):	120 x 320 x 180 mm
Weight:	1.9 kg

 **60 month warranty!**

 For **spare parts** contact your local distributor.

Frame Heater Zita Plus


- With constant electronic temperature control
- Adjustable
- Distance between the air jets: 35 mm
- Including spot heating jet
- Metal housing

2875 00

Technical data

Temperature level I:	to 75 °C
Temperature level II:	to 150 °C
Power:	900 W
Power usage per 10 min:	0.1499 kWh
Voltage:	230 V
Size (w x h x d):	144 x 213 x 200 mm
Weight:	1.46 kg

 **60 month warranty!**

 For **spare parts** contact your local distributor.






Frame Heater Maga S

- Very strong laboratory heater with heat from both sides
- Two electronically controlled temperature settings.
- Distance between the air jets: 45 mm
- Including spot heating jet
- Metal housing

2876 00

Technical data	
Temperature level I:	to 75 °C
Temperature level II:	to 150 °C
Power:	1,500 W
Power usage per 10 min:	0.2499 kW
Voltage:	230 V
Size (w x h x d):	190 x 215 x 315 mm
Weight:	3 kg

 **60 month warranty!**

 For **spare parts** contact your local distributor.



VENTILETTE Model 3

- With plastic cup Ø 80 mm, slit width 30 mm
- Casing and stand are made of aluminium
- Motor on rubber support for quieter running
- Universal motor for alternating current (AC) and direct current (DC)
- Extremely long carbon brushes increase service life span of motor
- With hot and cold switch

2861 22




VENTILETTE Model 3, Electronic


- Same as No. 2861 22, however with adjustable temperature level

2861 42



Technical data	2861 22	2861 42
Temperature level:	to max. 160 °C	40 to 200 °C (adjustable)
Power:	450 W	800 W
Power usage per 10 min:	0.0749 kWh	0.1333 kWh
Voltage:	230 V	230 V
Size (w x h x d):	275 x 135 x 145 (Ø stand) mm	275 x 135 x 145 (Ø stand) mm
Weight:	1.3 kg	1.6 kg

 **36 month warranty!**

 For **spare parts** contact your local distributor.